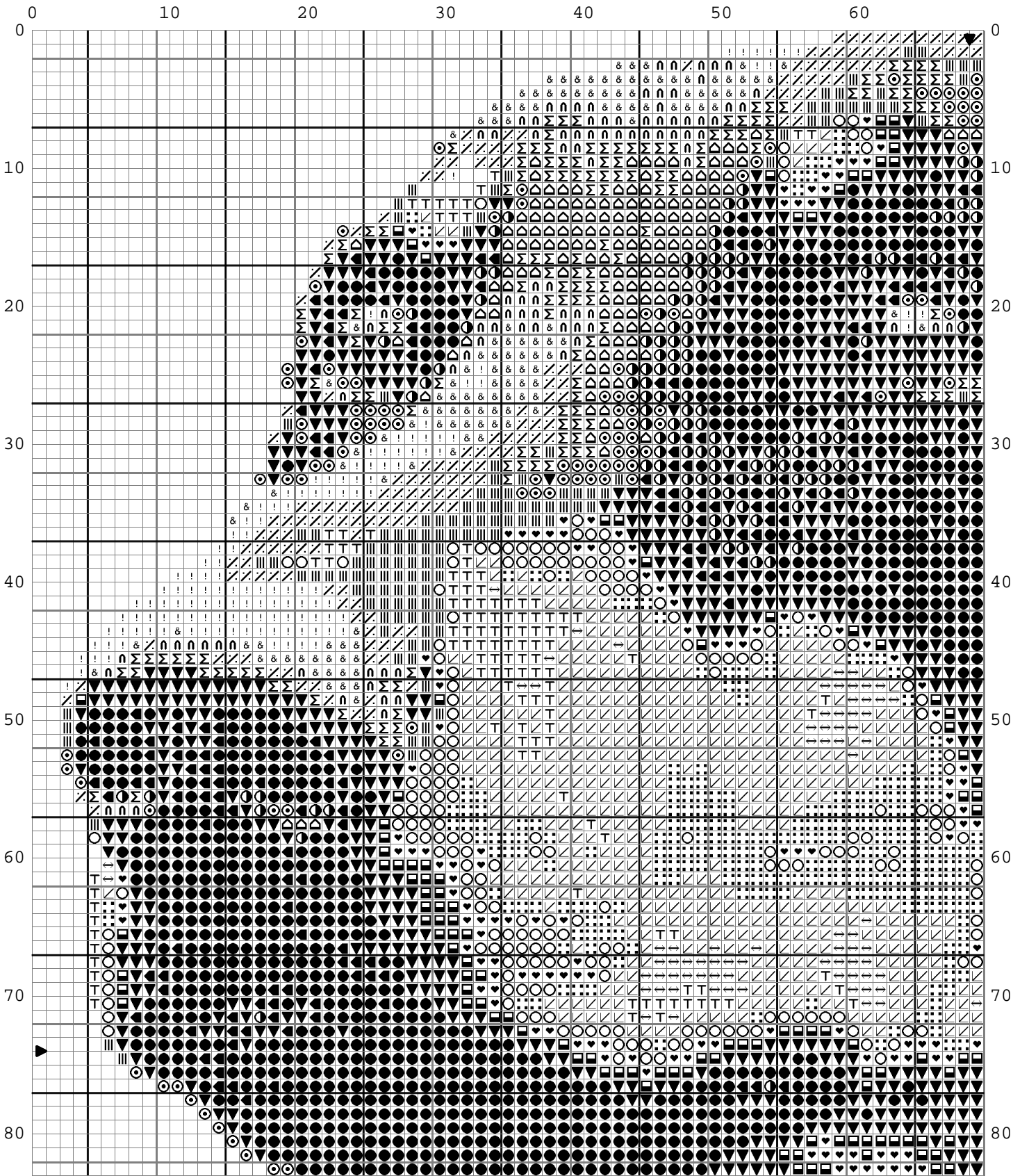


Rex



Rex



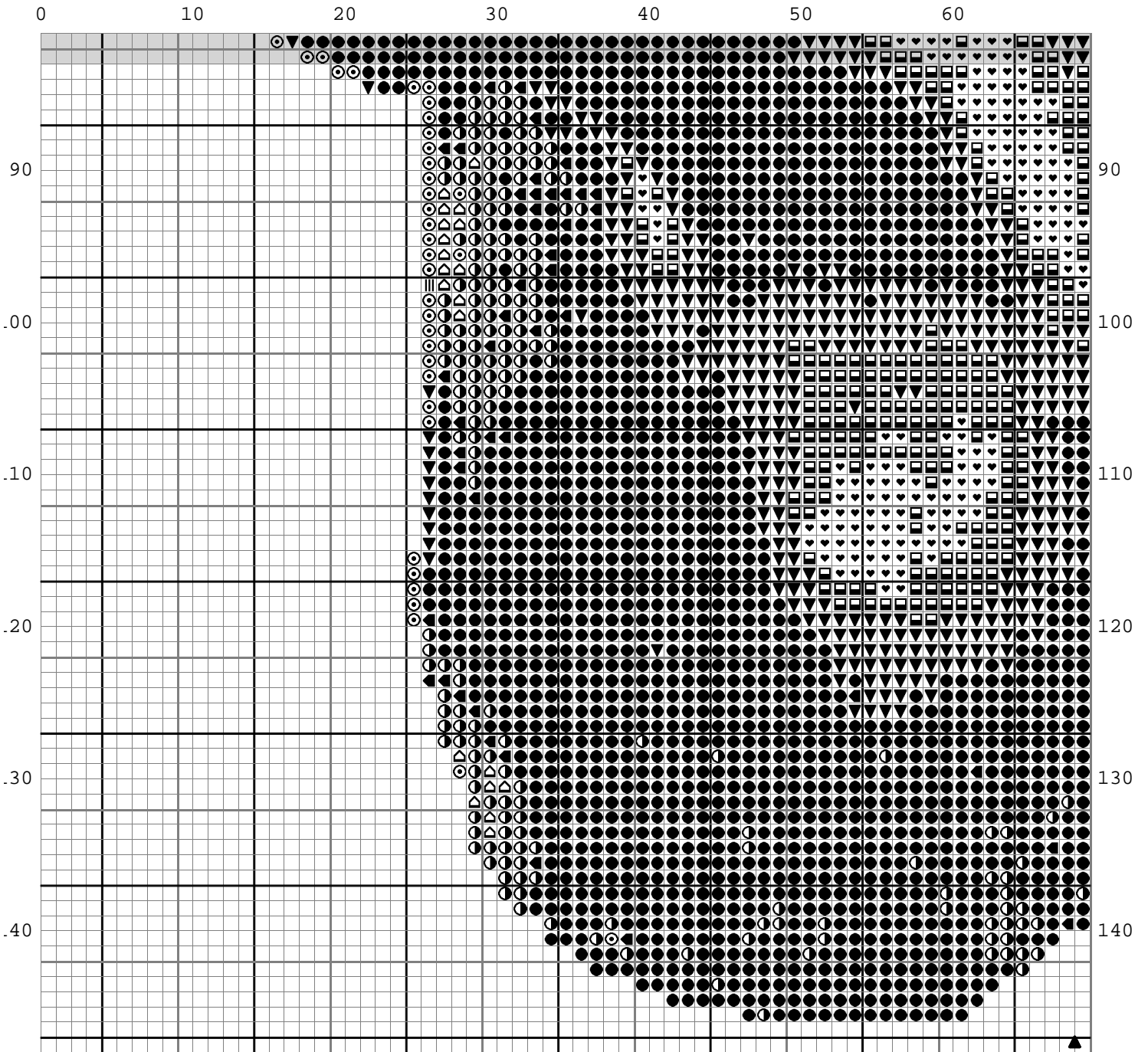
Design By: Alan Binding

Copyright © vicstitch 2005

- ← 3827    T 758    ♥ 3722    n 415    ⊙ 647    ▲ 414    ▼ 413
- ↙ 722    ⋮ 3778    ■ 315    ! Blanc    ◀ 645    ● 3799
- ||| 612    ○ 407    & 3756    Σ 647    / 453    ◐ 317



Rex

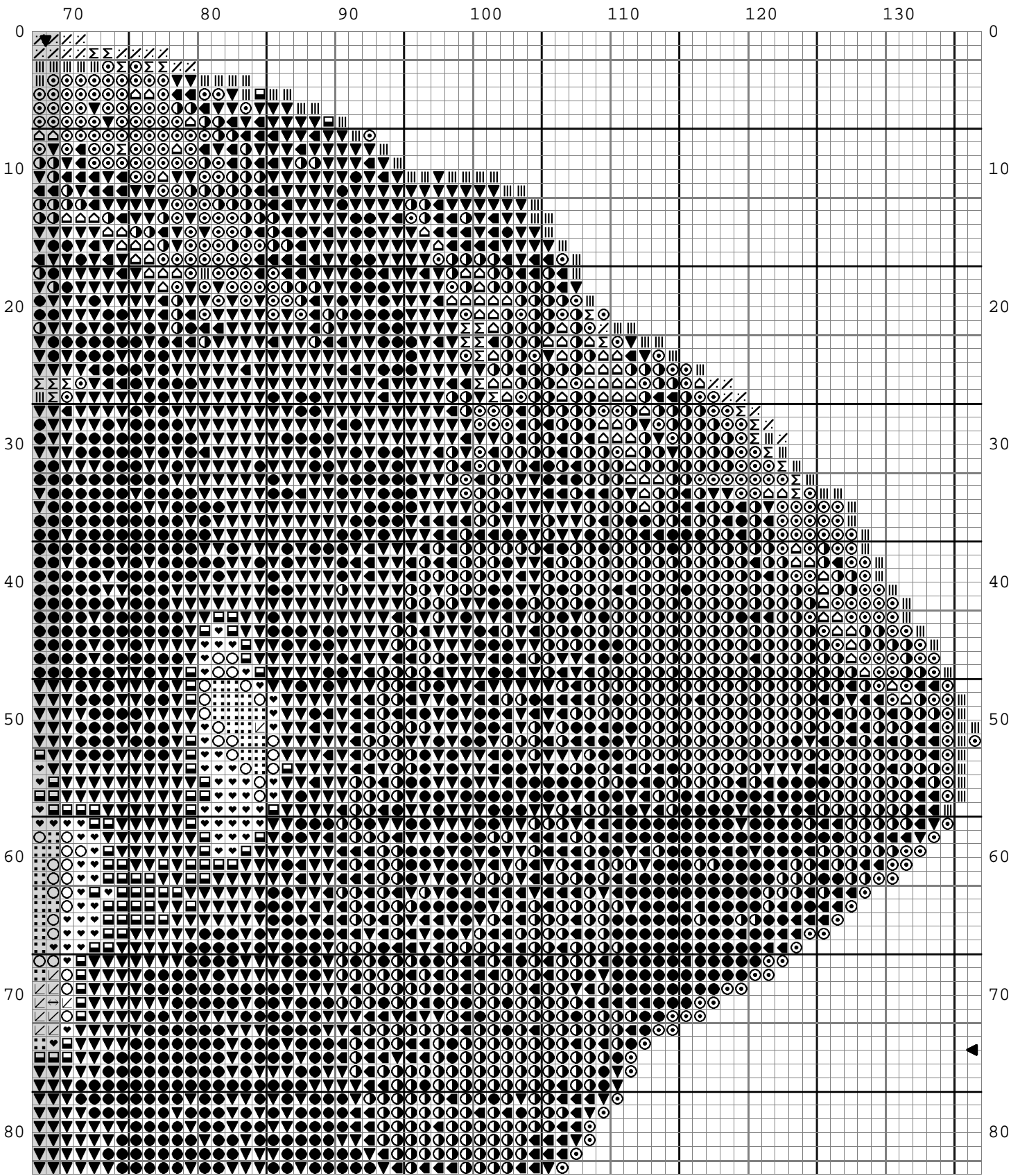


Design By: Alan Binding

Copyright © vicstitch 2005

- |        |       |       |        |       |
|--------|-------|-------|--------|-------|
| ▨ 612  | ◻ 315 | ◼ 645 | ● 3799 | ▼ 413 |
| ♥ 3722 | ◎ 647 | ▲ 414 | ◐ 317  |       |





Design By: Alan Binding

Copyright © vicstitch 2005

- ← 3827    ||| 612    ○ 407    ◻ 315    ⊙ 647    / 453    ● 3799    ▼ 413
- ↙ 722    ▤ 3778    ♥ 3722    Σ 647    ◐ 645    △ 414    ◑ 317



Rex

70

80

90

100

110

120

130

90

90

100

100

110

110

120

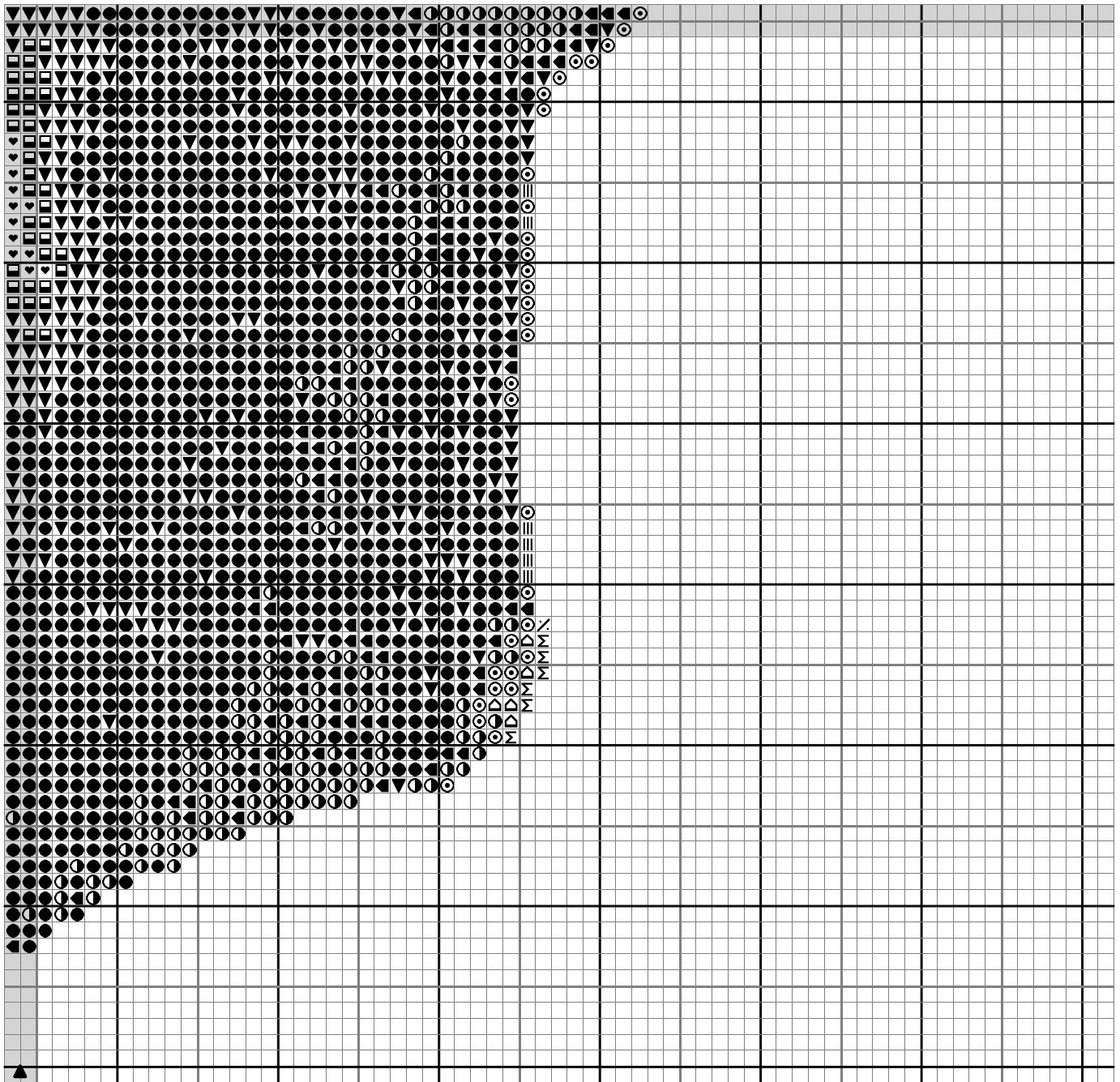
120

130

130

140

140



70

80

90

100

110

120

130

Design By: Alan Binding

Copyright © vicstitch 2005

- |        |       |       |       |        |       |
|--------|-------|-------|-------|--------|-------|
| 612    | ■ 315 | ⊙ 647 | / 453 | ● 3799 | ▼ 413 |
| ♥ 3722 | Σ 647 | ◀ 645 | △ 414 | ◐ 317  |       |



Rex

		DMC	Anchor				
↔	Tangerine vy lt	3827	311	14 in	0.05	8m	Skeins
↙	Orange Spice lt	722	323	68 in	0.22	8m	Skeins
≡	Mushroom lt	612	1082	37 in	0.12	8m	Skeins
T	Terracotta ultra vy lt	758	336	20 in	0.06	8m	Skeins
⋮	Terracotta vy lt	3778	337	34 in	0.11	8m	Skeins
○	Antique Flesh dk	407	914	34 in	0.11	8m	Skeins
♥	Shell Pink dk	3722	1027	47 in	0.15	8m	Skeins
■	Antique Mauve vy dk	315	1019	55 in	0.18	8m	Skeins
&	Misty Blue ultra vy lt	3756	1037	20 in	0.07	8m	Skeins
∩	Misty Blue lt	415	343	16 in	0.05	8m	Skeins
!	White bright	Blanc	1	20 in	0.07	8m	Skeins
M	Beaver Grey lt	647	1040	29 in	0.10	8m	Skeins
⊙	Beaver Grey med	647	8581	63 in	0.20	8m	Skeins
▲	Beaver Grey dk	645	273	91 in	0.29	8m	Skeins
⋈	Shell Grey lt	453	231	29 in	0.09	8m	Skeins
▷	Pewter Grey med	414	235	39 in	0.13	8m	Skeins
●	Pewter Grey vy dk	3799	236	485 in	1.52	8m	Skeins
◐	Steel Grey dk	317	400	167 in	0.52	8m	Skeins
▼	Steel Grey vy dk	413	401	263 in	0.82	8m	Skeins

Stitch Count 134 x 146  
Design Area 7 1/2 x 8 1/8 inches at 18ct  
8 3/8 x 9 1/8 inches at 16ct  
9 5/8 x 10 3/8 inches at 14ct

Note: Vicstitch  
1/33 Thomson Street  
Belmont, VIC 3216

WebSite [www.vicstitch.com.au](http://www.vicstitch.com.au)

Design By: Alan Binding

Copyright © By: vicstitch 2005