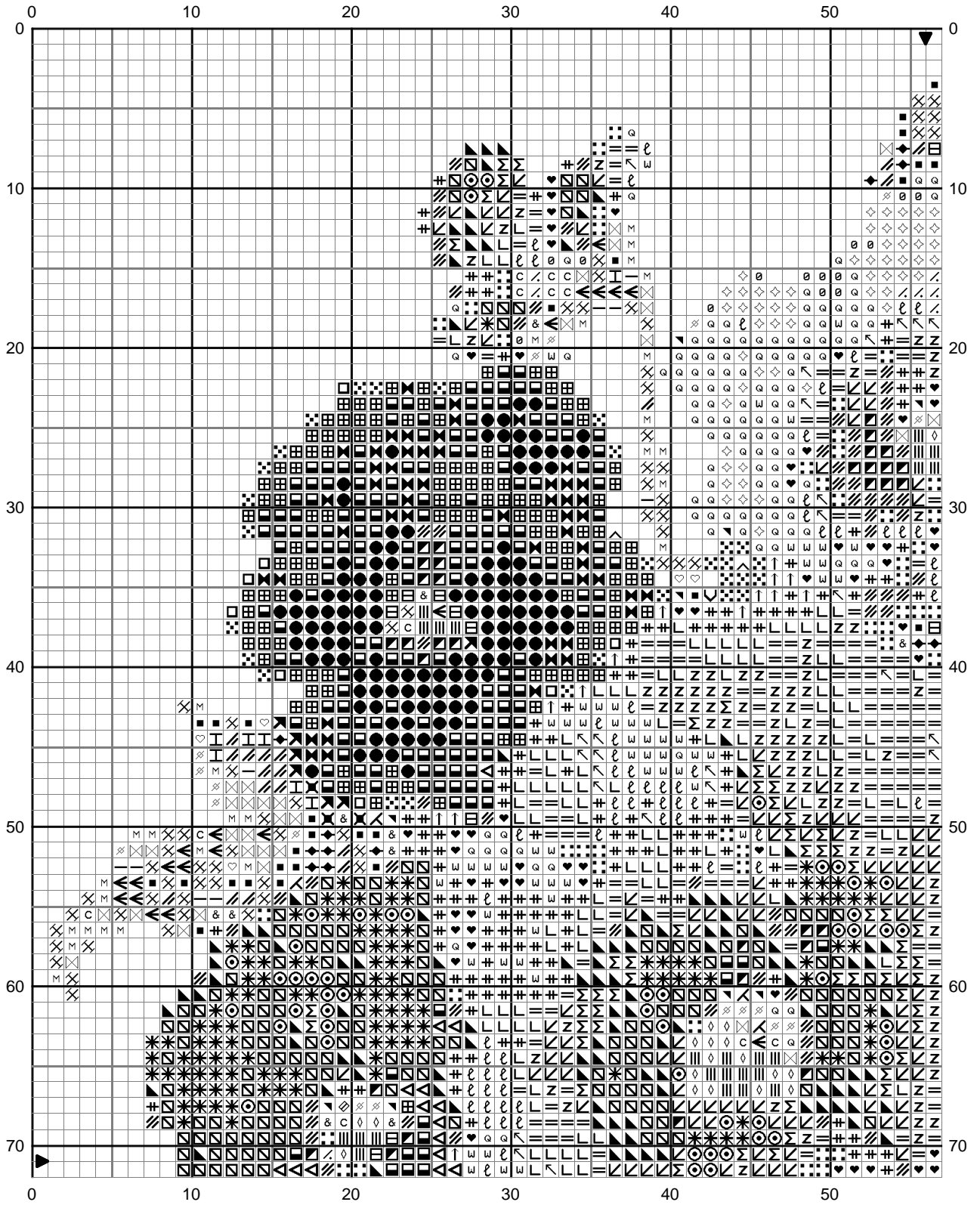


Pansie



Paisie



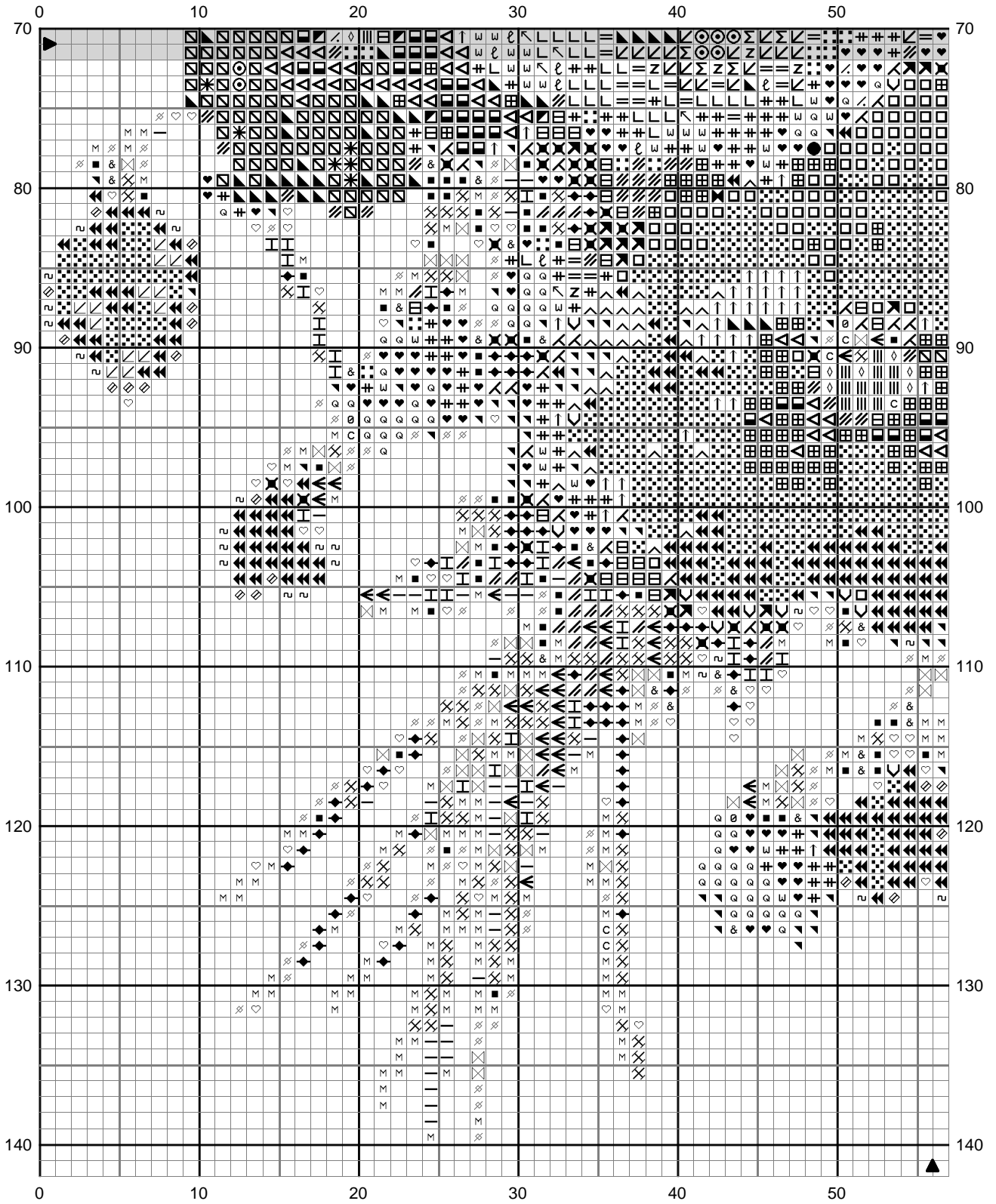
Design By: Alan Binding

Copyright © Vicstitch 2005

- | | | | | | | | | |
|-------|-------|-------|-------|--------|--------|--------|--------|--------|
| ↑ 209 | — 369 | ◻ 552 | ◼ 792 | ↗ 931 | ↖ 3042 | ⌒ 3608 | ↘ 3716 | ⊕ 3836 |
| ^ 210 | ≡ 436 | ◼ 553 | ◻ 793 | ∪ 932 | ⊗ 3047 | ⌒ 3609 | ⊞ 3727 | ◁ 3837 |
| ⊗ 318 | ⊞ 451 | ◉ 644 | ⊙ 800 | c 951 | ♡ 3072 | ↙ 3687 | ◀ 3743 | ◇ 3855 |
| ◻ 333 | & 453 | ⊙ 718 | ⊙ 819 | z 962 | ℓ 3354 | = 3688 | ◻ 3746 | ∅ 3866 |
| ⊞ 340 | ↖ 472 | ♡ 778 | m 822 | ∩ 963 | ∕ 3364 | ⊙ 3689 | ◻ 3834 | |
| I 368 | ◆ 523 | ● 791 | * 917 | ⊗ 3013 | Σ 3607 | ↙ 3713 | ∕ 3835 | |



Paisie



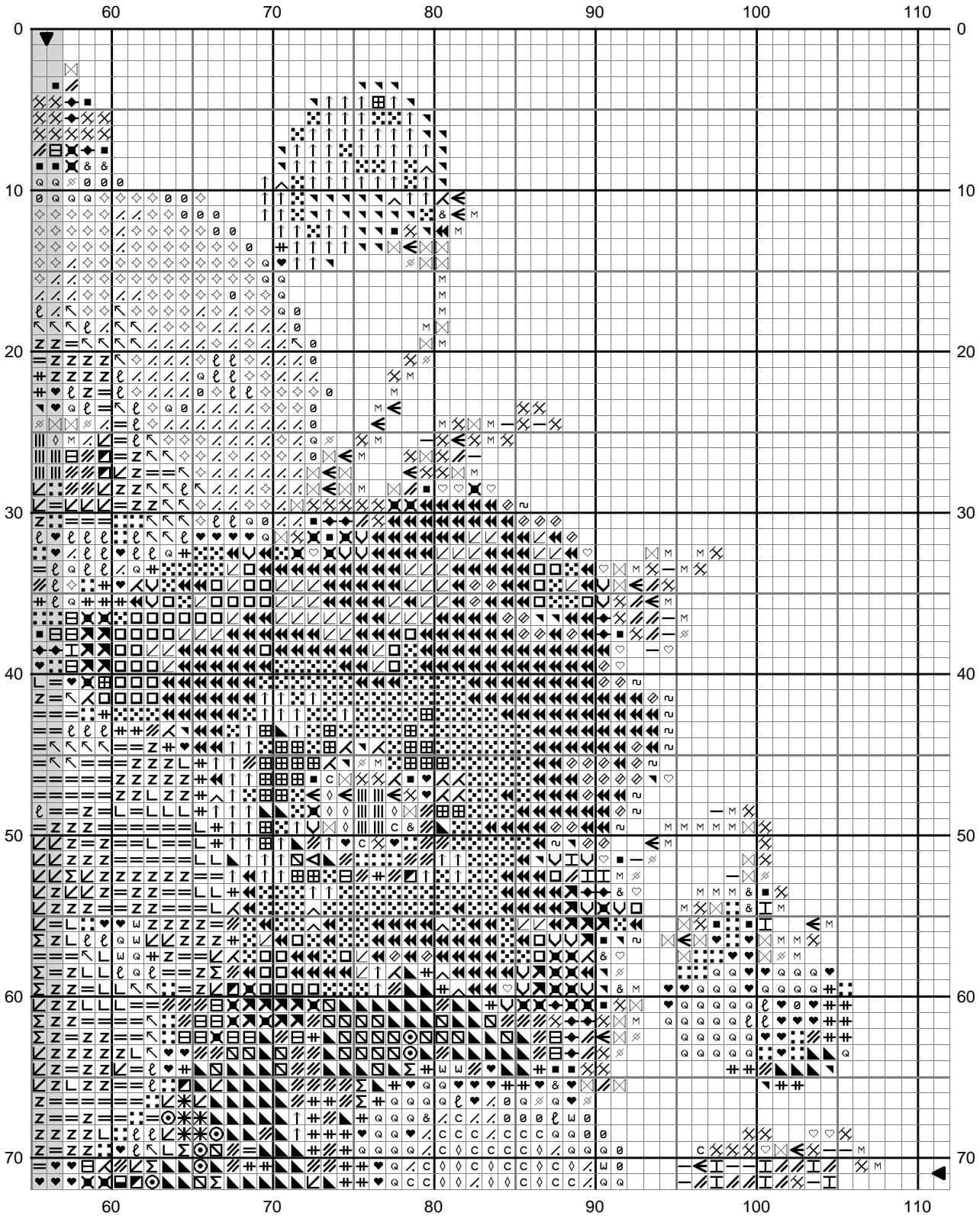
Design By: Alan Binding

Copyright © Vicstitch 2005

- | | | | | | | | | |
|-------|-------|-------|-------|-------|--------|--------|--------|--------|
| ↑ 209 | ┆ 368 | ◆ 523 | ● 791 | Ⓜ 822 | ✕ 3013 | Σ 3607 | ∠ 3713 | ▣ 3834 |
| ∧ 210 | ┆ 369 | ◻ 552 | ◀ 792 | ✱ 917 | ∠ 3042 | L 3608 | ∠ 3716 | ▨ 3835 |
| ✕ 318 | ▨ 436 | ▴ 553 | ◻ 793 | ✕ 931 | ∠ 3047 | ⊥ 3609 | ⋮ 3727 | ⊕ 3836 |
| ▣ 333 | ▣ 451 | ■ 644 | ∠ 800 | ⊂ 932 | ∠ 3072 | ∠ 3687 | ▣ 3743 | ◊ 3837 |
| ▣ 340 | & 453 | ⊙ 718 | ∠ 809 | c 951 | ℓ 3354 | ∠ 3688 | ▣ 3746 | ◊ 3855 |
| ◀ 341 | ◀ 472 | ♥ 778 | ⊙ 819 | z 962 | ∠ 3364 | ⊙ 3689 | ⊂ 3753 | ∠ 3866 |



Pansie



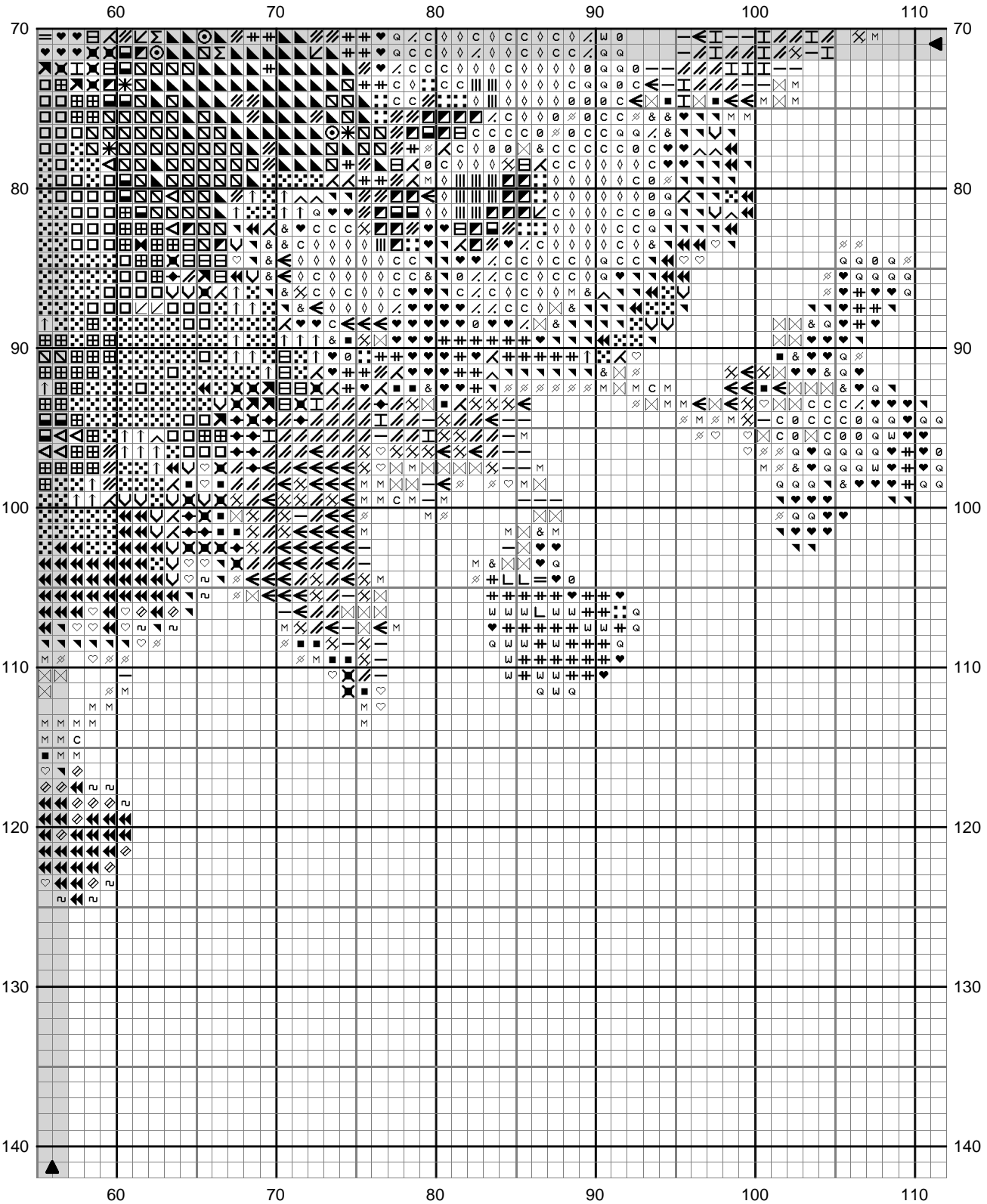
Design By: Alan Binding

Copyright © Vicstitch 2005

↑ 209	I 368	◆ 523	◻ 793	➤ 931	↙ 3042	L 3608	↖ 3716	/// 3835
^ 210	- 369	◻ 552	◇ 800	∪ 932	⊗ 3047	W 3609	■ 3727	# 3836
✕ 318	436	▴ 553	∅ 809	c 951	♡ 3072	↙ 3687	▾ 3743	◁ 3837
■ 333	▢ 451	■ 644	∅ 819	Z 962	ℓ 3354	= 3688	▢ 3746	◇ 3855
■ 340	& 453	⊙ 718	M 822	◇ 963	/// 3364	= 3689	z 3753	◇ 3866
◀ 341	◀ 472	♥ 778	* 917	✕ 3013	Σ 3607	↘ 3713	■ 3834	



Pansie



Design By: Alan Binding

Copyright © Vicstitch 2005

↑ 209	◀ 341	& 453	■ 644	◇ 800	↗ 931	⊗ 3047	∞ 3609	⋮ 3727	⧘ 3835
^ 210	I 368	◀ 472	⊙ 718	↙ 809	∪ 932	♡ 3072	↖ 3687	◀ 3743	# 3836
✕ 318	— 369	◆ 523	♥ 778	⊖ 819	c 951	∕ 3364	= 3688	⊞ 3746	◁ 3837
▣ 333	≡ 436	◻ 552	⊗ 792	M 822	⊗ 3013	Σ 3607	∞ 3689	≈ 3753	◇ 3855
⊞ 340	⊞ 451	▶ 553	◻ 793	* 917	∠ 3042	L 3608	∞ 3713	◻ 3834	∞ 3866



Pansies

	DMC	Anchor			
↑	Lavender dk	209	109	35 in	0.11 8m Skeins
↘	Lavender med	210	108	22 in	0.07 8m Skeins
✂	Steel Grey lt	318	399	27 in	0.09 8m Skeins
■	Blue Violet dk	333	119	37 in	0.12 8m Skeins
■	Blue Violet	340	118	94 in	0.30 8m Skeins
■	Blue Violet lt	341	117	85 in	0.27 8m Skeins
H	Pistachio Green lt	368	214	22 in	0.07 8m Skeins
	Pistachio Green vy lt	369	1043	28 in	0.09 8m Skeins
≡	Tan med	436	1045	15 in	0.05 8m Skeins
■	Shell grey dk	451	233	26 in	0.08 8m Skeins
&	Shell Grey lt	453	231	36 in	0.12 8m Skeins
∨	Avocado Green pale	472	264	38 in	0.12 8m Skeins
◆	Fern Green lt	523	858	30 in	0.10 8m Skeins
■	Violet dk	552	99	56 in	0.18 8m Skeins
■	Violet med	553	98	49 in	0.16 8m Skeins
■	Beige Grey med	644	830	39 in	0.13 8m Skeins
◎	Mauve med	718	88	16 in	0.05 8m Skeins
●	Antique Mauve vy lt	778	1016	59 in	0.19 8m Skeins
⊗	Cornflower Blue vy dk	791	123	21 in	0.07 8m Skeins
■	Cornflower Blue dk	792	177	12 in	0.04 8m Skeins
■	Cornflower Blue med	793	176	38 in	0.12 8m Skeins
◇	Delft pale	800	159	17 in	0.06 8m Skeins
∟	Delft	809	130	15 in	0.05 8m Skeins
ø	Baby Pink ultra vy lt	819	271	24 in	0.08 8m Skeins
M	Beige Grey lt	822	926	48 in	0.15 8m Skeins
✱	Mauve dk	917	89	25 in	0.08 8m Skeins
↖	Antique Blue med	931	1034	18 in	0.06 8m Skeins
∪	Antique Blue lt	932	343	21 in	0.07 8m Skeins
c	Sportsman Flesh lt	951	880	33 in	0.11 8m Skeins
z	Dusty Rose med	962	75	29 in	0.09 8m Skeins
◇	Dusty Rose vy lt	963	968	25 in	0.08 8m Skeins
✂	Khaki Green lt	3013	854	59 in	0.19 8m Skeins
∟	Antique Violet lt	3042	870	27 in	0.09 8m Skeins
⊗	Yellow Beige lt	3047	886	46 in	0.15 8m Skeins
♥	Beaver Grey vy lt	3072	234	37 in	0.12 8m Skeins
℘	Dusty Rose	3354	74	27 in	0.09 8m Skeins
∟	Laurel Green med	3364	260	31 in	0.10 8m Skeins
M	Mauve	3607	87	16 in	0.05 8m Skeins
∟	Mauve lt med	3608	86	27 in	0.09 8m Skeins
w	Mauve vy lt	3609	85	31 in	0.10 8m Skeins
∟	Plum med	3687	68	25 in	0.08 8m Skeins
≡	Plum lt	3688	1016	41 in	0.13 8m Skeins
q	Plum vy lt	3689	49	59 in	0.19 8m Skeins
↖	Salmon vy lt	3713	23	24 in	0.08 8m Skeins
↖	Dusty Rose lt	3716	25	18 in	0.06 8m Skeins
⋮	Antique Mauve med dk	3727	1016	32 in	0.10 8m Skeins
◀	Antique Violet vy lt	3743	869	49 in	0.16 8m Skeins
■	Blue Violet med	3746	1030	43 in	0.14 8m Skeins
z	Antique Blue ultra vy lt	3753	1031	15 in	0.05 8m Skeins
■	Grape dk	3834	970	20 in	0.07 8m Skeins
∟	Grape	3835	98	39 in	0.13 8m Skeins
#	Grape lt	3836	96	65 in	0.21 8m Skeins
∇	Lavender ultra dark	3837	99	13 in	0.05 8m Skeins
◇	Autumn Gold lt	3855	301	24 in	0.08 8m Skeins
∅	Ultra very Light Mocha Brown	3866	397	43 in	0.14 8m Skeins

Stitch Count 112 x 138

Design Area 8 x 9 7/8 inches at 14ct

Note: Vicstitch

1/33 Thomson Street, Belmont, VIC 3216

Tel 03 5244 1997 Fax 03 5244 0497

On-Line Store www.vicstitch.com.au

Design By: Alan Binding

Copyright © By: Vicstitch 2005